

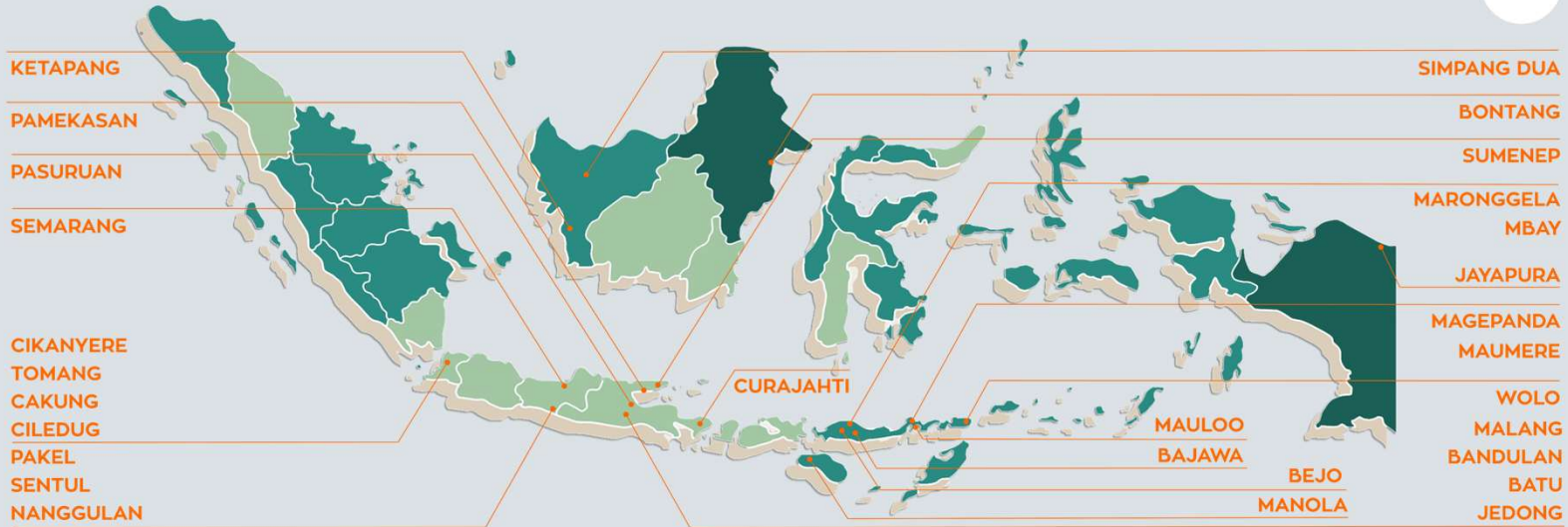
MEET THE SISTERS OF THE POOR CHILD JESUS

working & living with children

INDONESIA



- 1,904,569 km²
- 270 million
- 9.4% as at 2023 people living below the poverty line

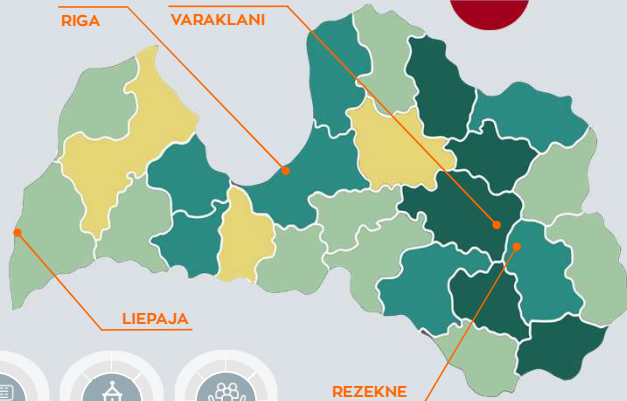


- since 1932
- 29 houses
- 25 schools
- 13 children's home
- 26 parishes
- 5 retreats
- 2 poly clinics
- 10,000 children

LETLAND



- 64,490 km²
- 1,86 million
- 21,4% as at 2022 people living below the poverty line

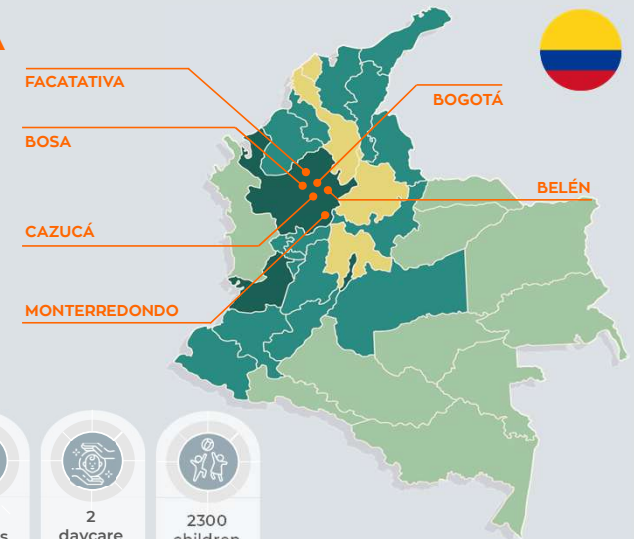


- since 1927
- 3 houses
- 1 school
- 5 parishes
- 500 people

COLUMBIA



- 1,141,748 km²
- 52 million
- 33% as at 2023 people living below the poverty line



- since 1937
- 6 houses
- 5 schools
- 2 daycare
- 2300 children