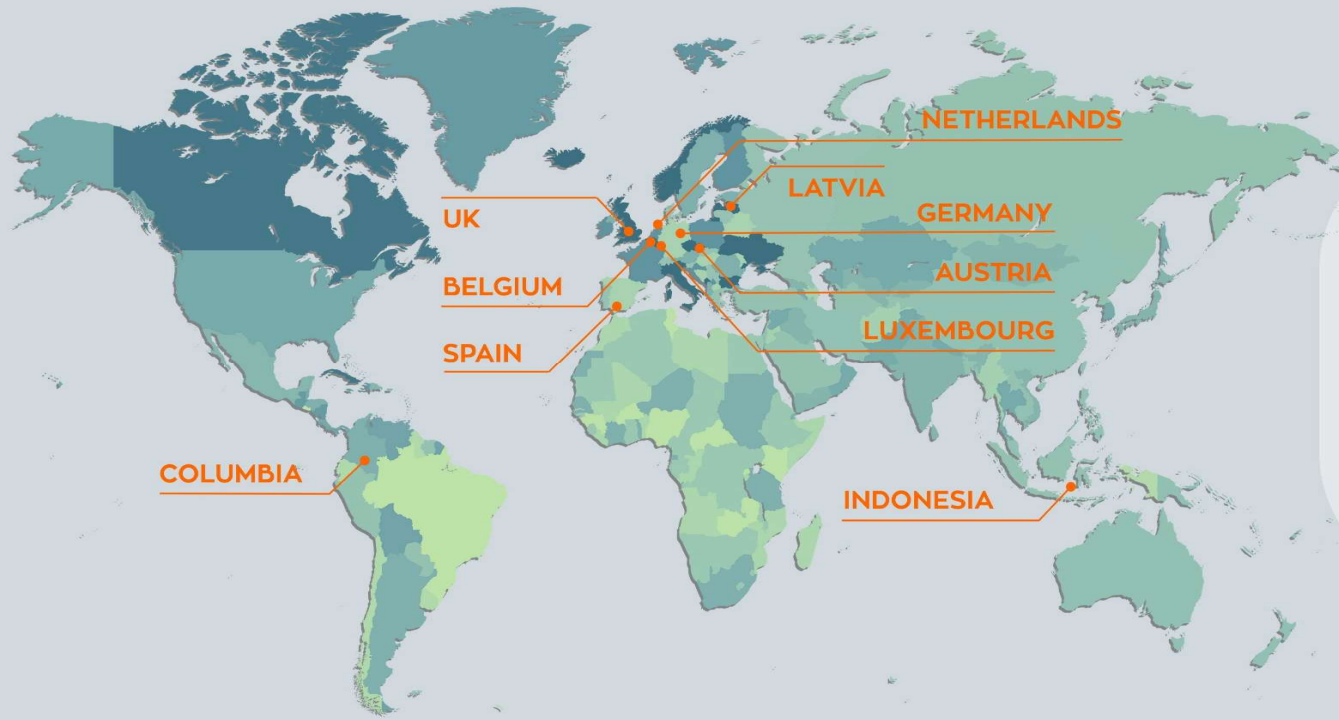


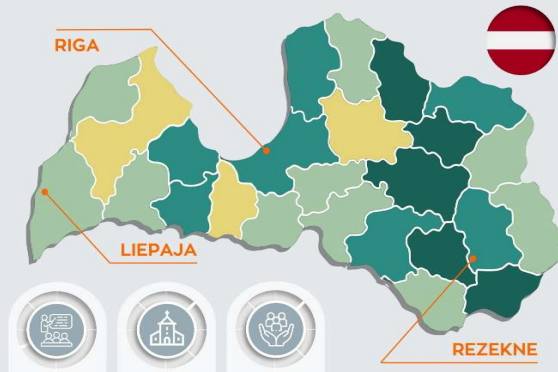
MEET THE SISTERS OF THE POOR CHILD JESUS

working & living with children



LATVIA

- 64,490 km²
- 1.86 million
- 21.4% as at 2022 people living below the poverty line



- since 1927
- 3 houses
- 1 school
- 5 parishes
- 500 people

INDONESIA

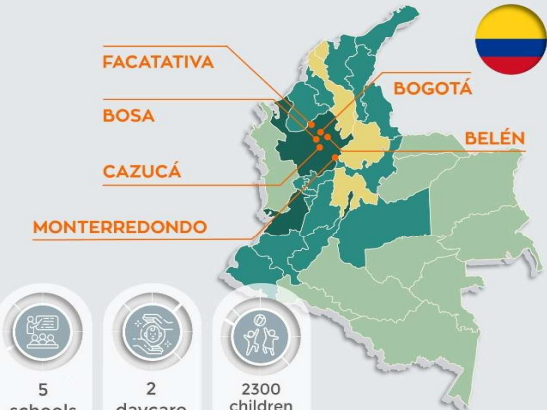
- 1.913.58 km²
- 270 million
- 9.4% as at 2022 people living below the poverty line



- since 1932
- 29 houses
- 21 schools
- 5 boarding schools
- 5 children's home
- 4 retreats
- 2 poly clinics
- 10,000 children

COLUMBIA

- 1,141,748 km²
- 52 million
- 36.6% as at 2022 people living below the poverty line



- since 1937
- 6 houses
- 5 schools
- 2 daycare
- 2300 children in 2025

